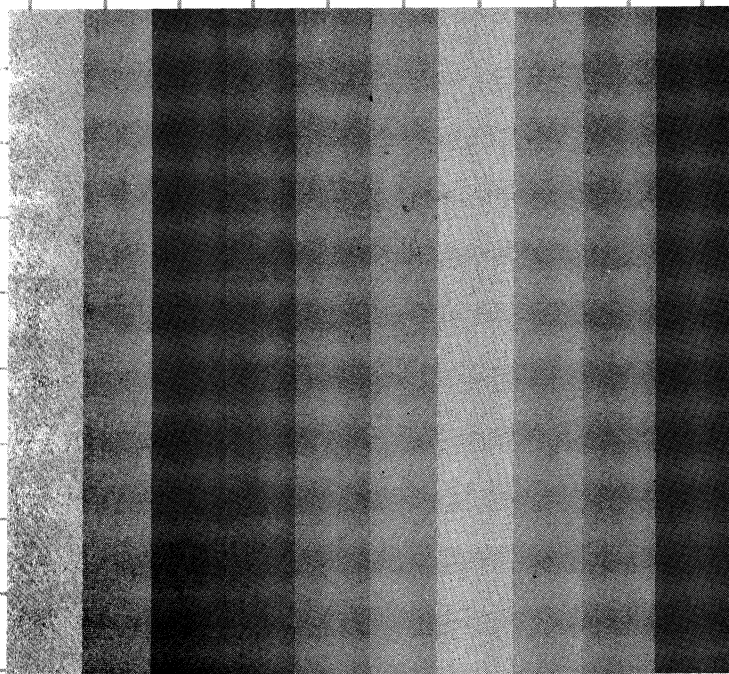


# **DICK SMITH**

# **VZ200**

**Personal Colour Computer**



**USER MANUAL**

## BOX CONTENTS

When you open the box you should find the following:

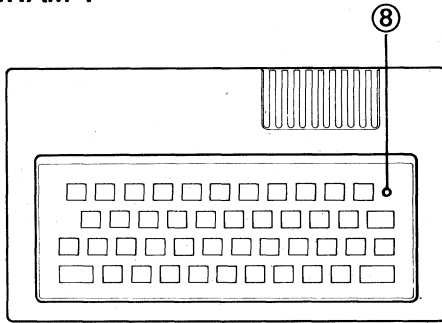
1. This User Manual.
2. Basic Reference Manual.
3. A booklet named 'BASIC APPLICATION PROGRAMS'.
4. Your Colour Computer.
5. A Power Adaptor.
6. A Cord to connect your computer to the TV Antenna Outlet.
7. A Cord to connect your computer to a standard audio cassette recorder.
8. A Demonstration Tape.

To get your Computer working you will need a colour TV, a B/W TV or a Video Monitor.

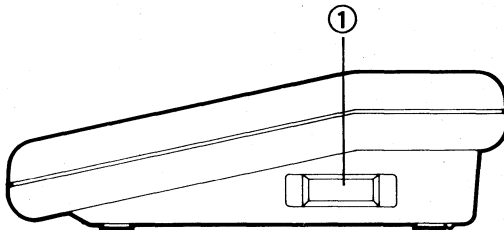
## **PROCEDURE FOR SETTING UP THE COLOUR COMPUTER**

- A.** Disconnect the aerial cord from your television set. Connect a cord from the TV socket on your computer to the aerial socket on your TV set.
- B.** Connect your power adaptor to a normal wall AC outlet.
- C.** Connect the adaptor power plug to the power socket on your computer.
- D.** Switch on the power by pressing the power switch. Check the power indication lamp on the main console. If the power is on, there is a red light. If there is no red light, switch off and check all your connections.
- E.** Turn on the television set and select channel 1 (VHF).
- F.** If the screen shows a title message and a green square with the word **READY**, then the set-up is all right.
- G.** If the screen does not show the above message, switch off the power of your computer for about 10 seconds and switch on again.
- H.** If after several attempts you still do not succeed, switch off the power and check all the connections.
- I.** If a Monitor is connected (use the Monitor Socket), the mentioned message should come out when you turn on the power of your computer. If you cannot get this message, turn off the power of your computer and check all the connections. (also check the **BRIGHTNESS** level of the **MONITOR**)

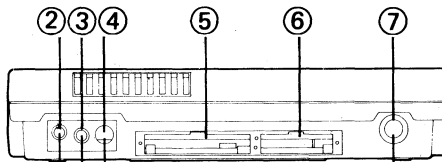
# DIAGRAM 1



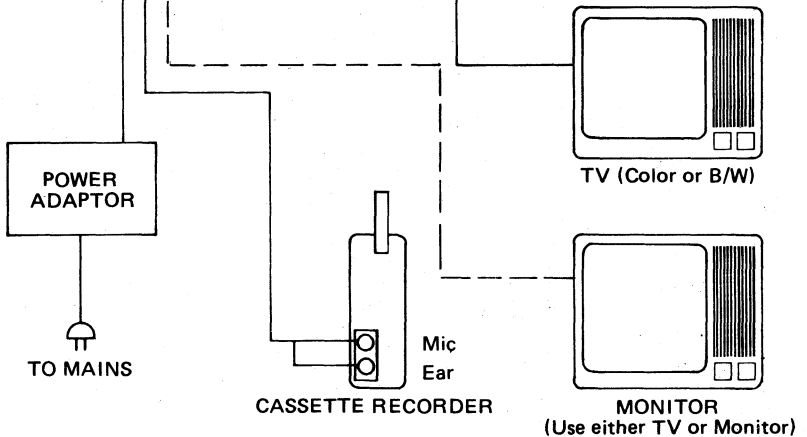
TOP VIEW



SIDE VIEW



BACK VIEW



## CONNECTIONS AND SWITCH

### 1. ON/OFF SWITCH

This controls the power supply to the computer. When it is switched on, a red indicator light (8) should show at the top right hand corner.

### 2. POWER SOCKET

The cord from the power adaptor is connected to here.

### 3. CASSETTE SOCKET

This is the cassette input/output socket. Your cassette tape recorder is connected to here.

### 4. MONITOR SOCKET

If you are using a Video Monitor, then it is connected at this location.

### 5. MEMORY EXPANSION

If you decide to use a memory expansion module to your computer, just remove the cover from this aperture and insert the memory expansion module. (BE SURE TO TURN OFF THE POWER BEFORE INSERTING OR REMOVING ANY EXPANSION MODULE)

### 6. PERIPHERAL

Peripherals such as the Printer Interface module or Joystick are connected at this location. (BE SURE TO TURN OFF THE POWER BEFORE INSERTING OR REMOVING ANY EXPANSION MODULE)

### 7. TV SOCKET

The cord connecting the television antenna socket to your computer is connected to here. Make sure your TV is set for channel 1 (VHF).

### 8. INDICATOR LIGHT

This indicates the power supply to your computer. When the power switch is turned on, it should glow.

## **PRECAUTIONS**

To ensure that your computer gives long and trouble-free service, please observe the following simple precautions:

- 1. Keep the main unit away from liquids.**
- 2. Avoid exposing the main unit to excessive heat. Store in a dry place.**
- 3. Switch off the power and disconnect the power plug when not in use.**
- 4. Do not drop the main unit. Handle it with care.**
- 5. Make sure the power is turned off when inserting or removing any expansion modules such as the Memory Expansion Module or Printer Interface Module.**

# TROUBLE SHOOTING CHECKLIST

## SYMPTOM

1. No Indicator Light
  - The Mains supply not turned on at the power outlet.
  - The Power Adaptor not properly plugged into power outlet.
  - Power switch not turned on.
  - The power plug not correctly plugged in computer.
  
2. No Screen Display
  - Aerial cord not properly connected or badly plugged in.
  - The TV set not properly tuned.
  - Mismatch the TV set to the Monitor socket.
  - Mismatch the Monitor to the TV socket.
  
3. Screen Display without the READY Signal
  - Improper set-up procedure. Try switching off.
  
4. Abnormal Performance
  - Improper set-up procedure. Switch off the power for a while and switch on again.
  
5. Cassette Loading and Saving Won't Work
  - Cassette Interface Cord not properly connected or badly contacted. (Check that you have the MIC and EAR plugs into the correct recorder sockets.)
  - The tone and volume level of the cassette recorder not set at proper range. (Please refer to Basic Programming Manual)

If none of the above work, please contact your nearest Dealer.

